
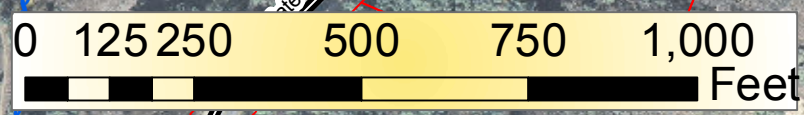


G:\Env\Shared\GIS\Routes\LA-027\Map request for Skylar Felman August 7, 2012

- Postmile
- ~ Topanga Canyon Creek
- Affected parcels

State Route 27
 California Department of Transportation
 District 7, Los Angeles
 Map revised by Billy Ho
 August 8, 2012

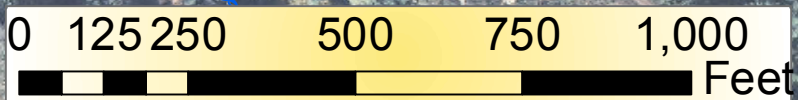



G:\Env\Shared\GIS\Routes\LA-027 Map request for Skylar Felman August 7, 2012



- Postmile
- Topanga Canyon Creek
- Affected parcels

State Route 27
 California Department of Transportation
 District 7, Los Angeles
 Map revised by Billy Ho
 August 8, 2012

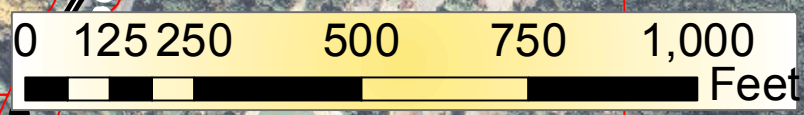




G:\Env\Shared\GIS\Routes\LA-027\Map request for Skylar Felman August 7, 2012

- Postmile
- ~ Topanga Canyon Creek
- Affected parcels

State Route 27
 California Department of Transportation
 District 7, Los Angeles
 Map revised by Billy Ho
 August 8, 2012

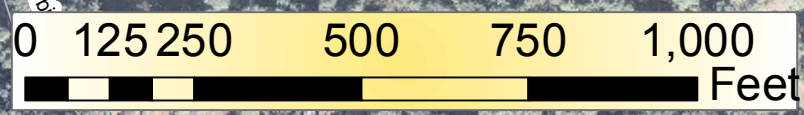


G:\Env\Shared\GIS\Routes\LA-027\Map request for Skylar Felman August 7, 2012



- Postmile
- Topanga Canyon Creek
- Affected parcels

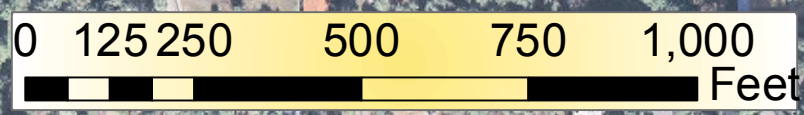
State Route 27
California Department of Transportation
District 7, Los Angeles
Map revised by Billy Ho
August 8, 2012





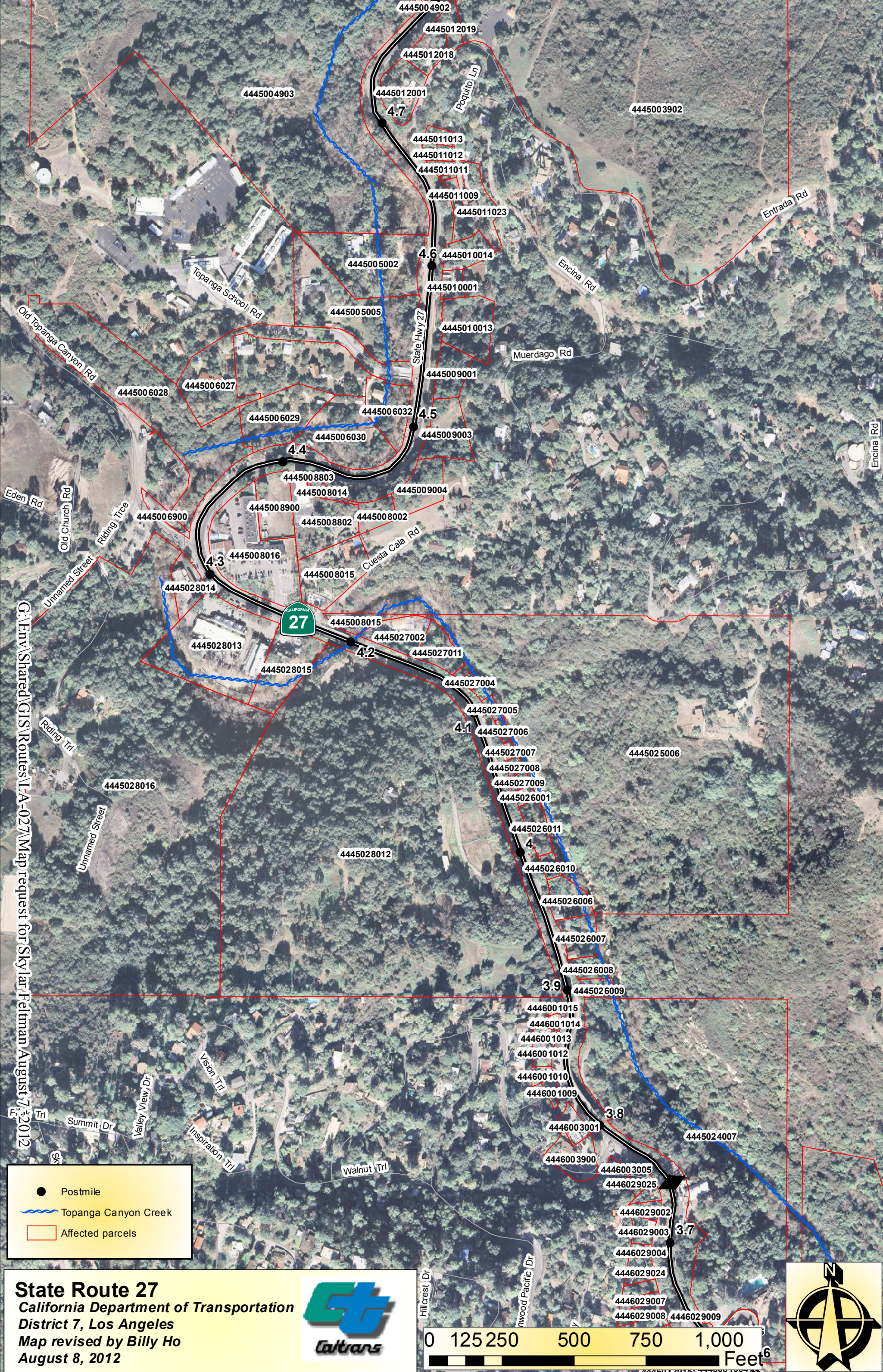
- Postmile
- Topanga Canyon Creek
- Affected parcels

State Route 27
 California Department of Transportation
 District 7, Los Angeles
 Map revised by Billy Ho
 August 8, 2012



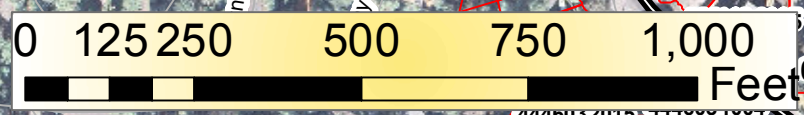
G:\Env\Shared\GIS\Routes\LA-027 Map request for Skylar Felman August 7, 2012.z

G:\Env\Shared\GIS\Routes\LA-027\Map request for Skylar Felman August 7, 2012



- Postmile
- ~ Topanga Canyon Creek
- Affected parcels

State Route 27
California Department of Transportation
District 7, Los Angeles
Map revised by Billy Ho
August 8, 2012


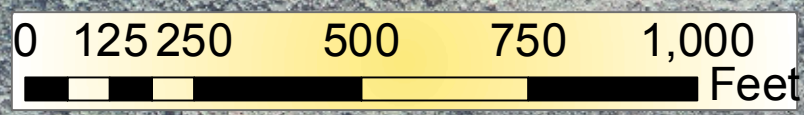




G:\Env\Shared\GIS\Routes\LA-027\Map request for Skylar Felman August 7, 2012

- Postmile
- Topanga Canyon Creek
- Affected parcels

State Route 27
 California Department of Transportation
 District 7, Los Angeles
 Map revised by Billy Ho
 August 8, 2012

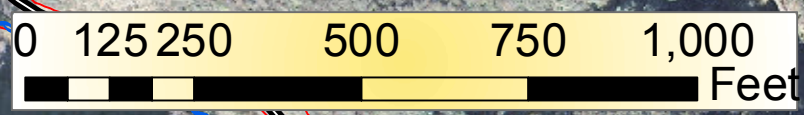





G:\Env\Shared\GIS\Routes\LA-027\Map request for Skylar Felhman August 7, 2012

- Postmile
- Topanga Canyon Creek
- Affected parcels

State Route 27
 California Department of Transportation
 District 7, Los Angeles
 Map revised by Billy Ho
 August 8, 2012



4448004900

4448004901

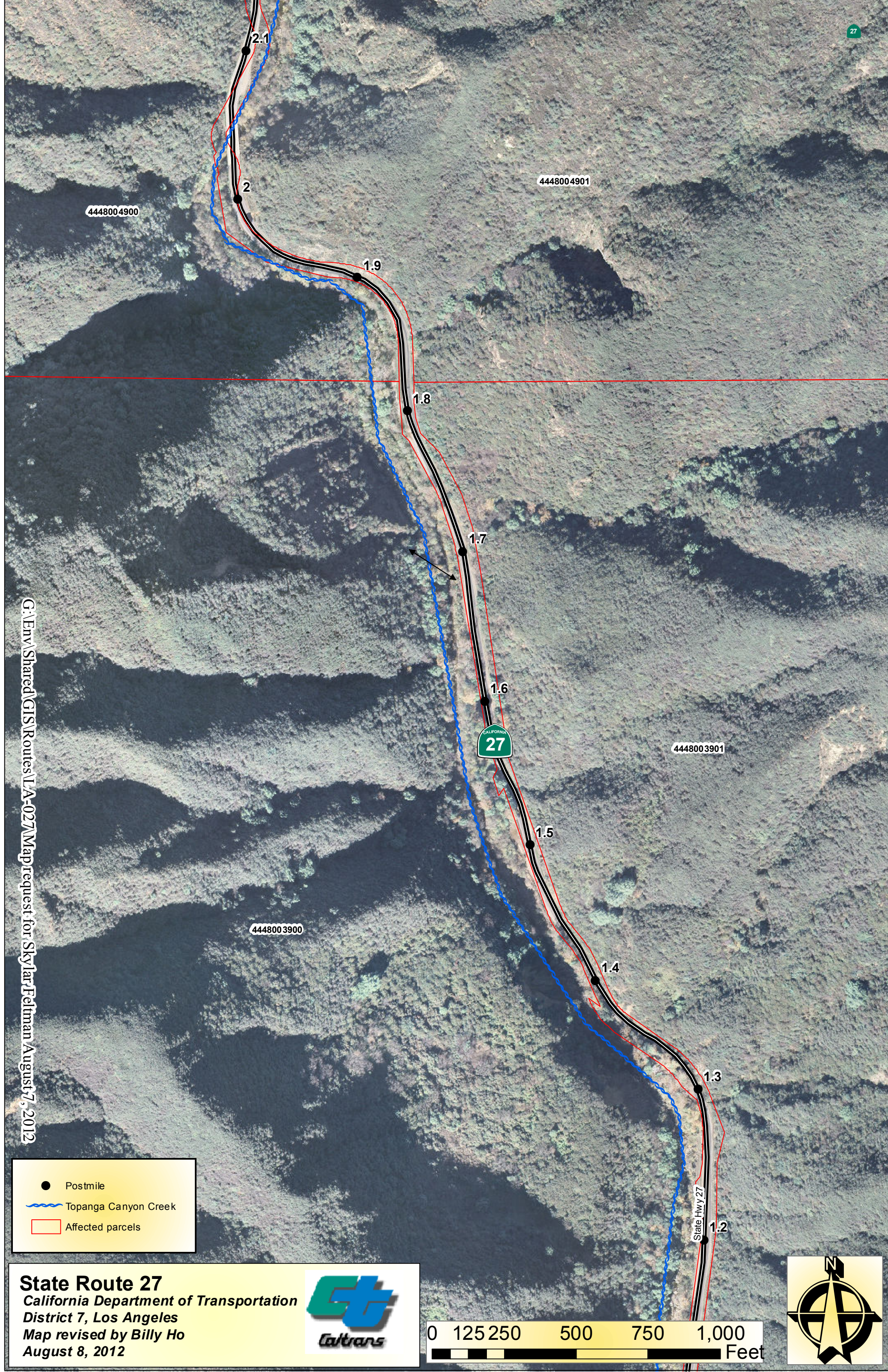
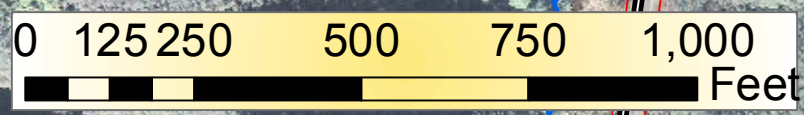
4448003900

4448003901

G:\Env\Shared\GIS\Routes\LA-027\Maprequest for SkyJar Felman August 7, 2012

- Postmile
- ~ Topanga Canyon Creek
- Affected parcels

State Route 27
 California Department of Transportation
 District 7, Los Angeles
 Map revised by Billy Ho
 August 8, 2012



G:\Env\Shared\GIS\Routes\LA-027\Map request for Skylar Felman August 7, 2012



- Postmile
- ~ Topanga Canyon Creek
- Affected parcels

State Route 27
California Department of Transportation
District 7, Los Angeles
Map revised by Billy Ho
August 8, 2012



4448003900

4448003901

0.7

0.6

Brookside Dr

4448002902

4448002903

0.4

Clifftop Way



0.3

4443004900

Kingsport Dr

Driveway

Rodeo Grounds Ln

0.2

4443003002

Wakecrest Dr

4448002901

Topanga Canyon Ln

4443003003

4443003005

4443003006

Coastline Dr

0.1

4443003010

Old Malibu Rd

Topanga Canyon Ln

4448002900

40.8

40.7

40.6

State Hwy 1

41

41.1

Topanga Beach Dr

G:\Env\Shared\GIS\Routes\LA-027\Map request for Skylar Felman August 7, 2012

- Postmile
- ~ Topanga Canyon Creek
- Affected parcels

State Route 27
 California Department of Transportation
 District 7, Los Angeles
 Map revised by Billy Ho
 August 8, 2012

